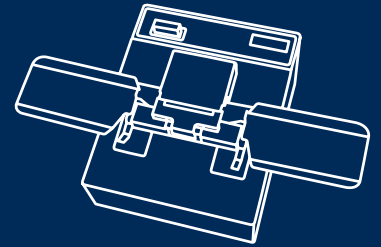
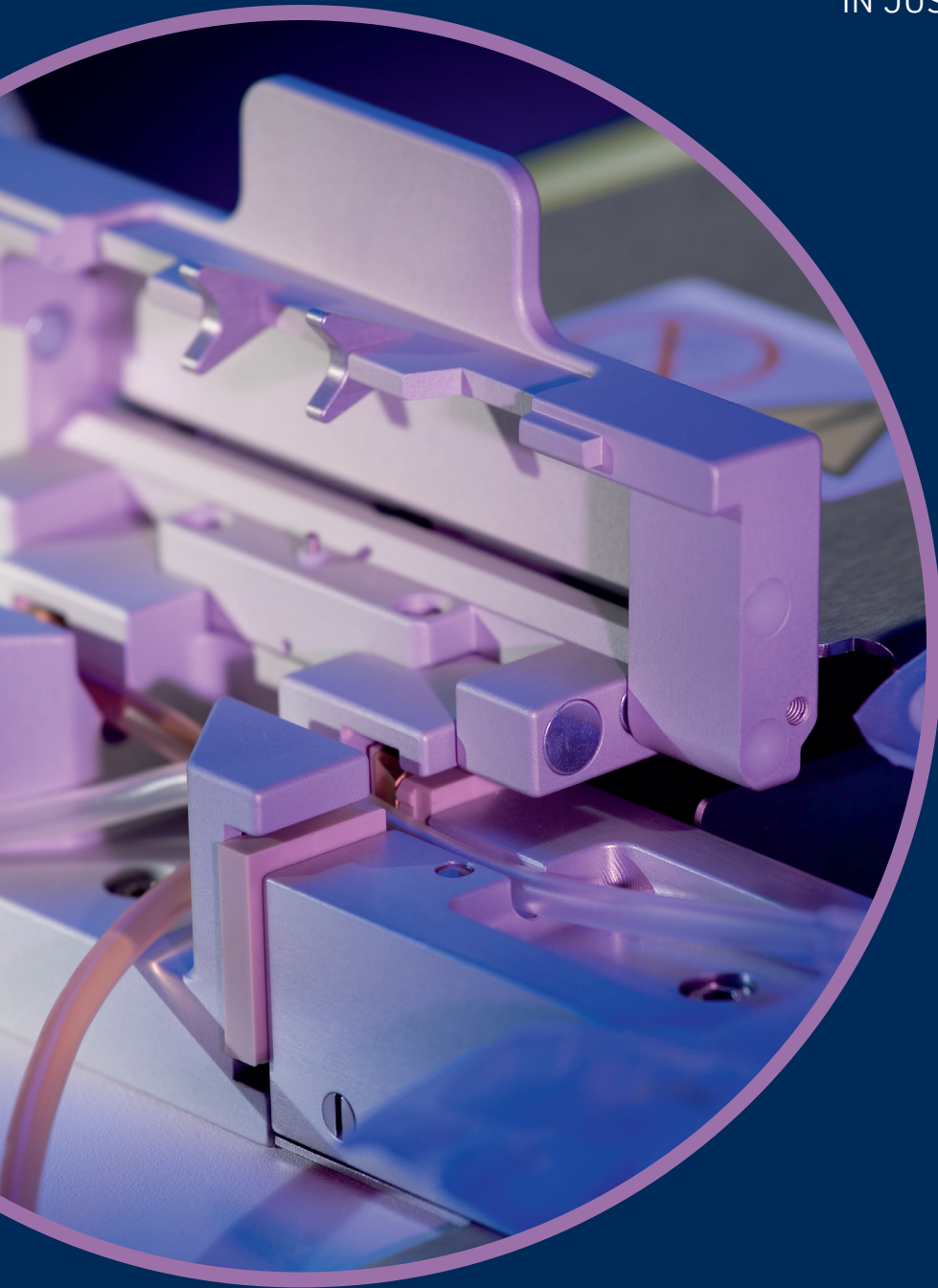


MEDICAL DEVICES

CompoDock®

STERILE PVC TUBE CONNECTIONS
IN JUST TWO STEPS



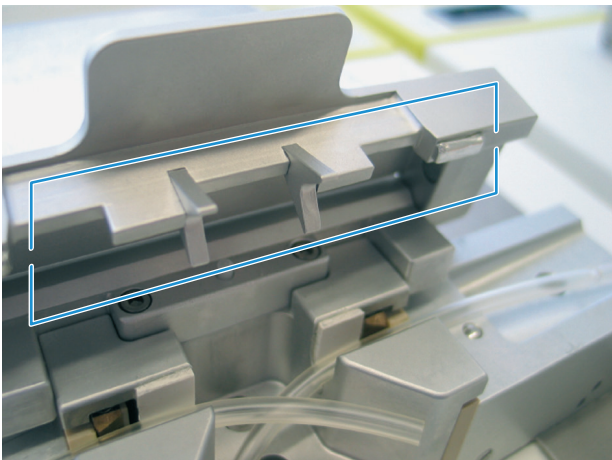
**FRESENIUS
KABI**

caring for life

CompoDock®

The patented technology for sterile connection of PVC tubing - new and improved

CompoDock® is a unique machine that does not require wafers as it has a permanent heating element. This leads to a number of benefits on environmental/health and safety aspects in operation:



Quick and easy handling

Operation is quick, as no wafer loading is necessary. Wafer loss caused by jamming cannot occur. The loading of the system takes place in just two steps (see page 5) and is designed to prevent any problems with tube mix up. Finally, no contaminated wafers have to be disposed.

New tube alignment

The new position cover prevents fail docks due to misalignment. Tube guards (see picture, marked area) position the tubes automatically in the right position, whenever the cover is closed. This construction of the new tube alignment supports fail safe handling, which is especially attractive for intensive use.

Fully closed system - reduced odour and exhaust

The element heats the sealed tube ends without touching them. The tube ends of the docked tube remain sealed until the dock is completed and the waste tube ends remain closed for disposal (no risk of contamination). Smell and exhaust caused by burned PVC material is significantly reduced compared to systems using wafers. This is highly appreciated by operators with systems already in use.

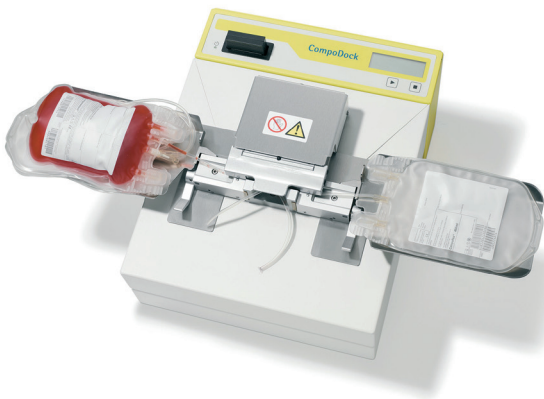
Reduced tube length

By introducing the new moving bag support trays the disposables are transported together with the clamps during the docking process. The benefit is that the minimum required tube length is reduced to 10 cm.

Unique waferless technology · Fully closed system · Quick and odour compared to systems using wafers

- ① **New and Improved**
Moving bag support trays reduce the required tube length and ensure correct positioning of tubes
- ② **New and Improved**
Clamps to assure optimal tube alignment
- ③ **New - Position Cover**
The construction of the position cover supports fail safe handling
- ④ **New and Improved**
Re-designed middle block for easier tube positioning; also supporting correct tube alignment

Very simple loading of bag systems as the clamps only have one tube channel: a mix up by accident is not possible!



CompoDock® Counter (Counter with 500, 1000 and 2500 docks available)



Highly efficient pooling by "chain" method: Docking of a pool of four buffy coats and one plasma in less than 1:20 minute. Ask for our promotion film.

easy handling · New position cover · Significantly reduced



Field of application

- Pooling of buffy coats and/or platelet concentrates
- Sterile docking of filters
- Sterile docking of platelet additive solution
- Paediatric use
- Virus inactivation procedures
- Sampling
- Modifying apheresis sets

Tube compatibility and processing time

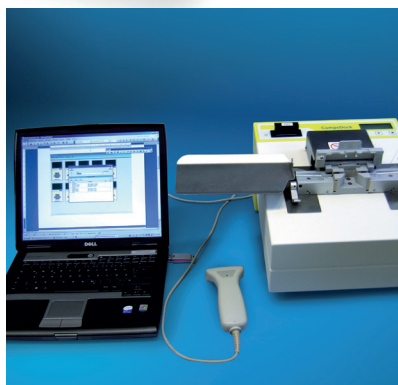
CompoDock® enables you to make sterile connections between medical PVC tubing:

- between all wet and dry tubing combinations (wet/wet · wet/dry · dry/dry)
- with outer diameter varying for standard versions: between 3.9 mm and 4.6 mm (3.9/3.9 · 3.9/4.6 · 4.6/4.6)
for version with bore tube: between 4.6 mm and 5.4 mm
- with a process cycle time of approx. 20 seconds

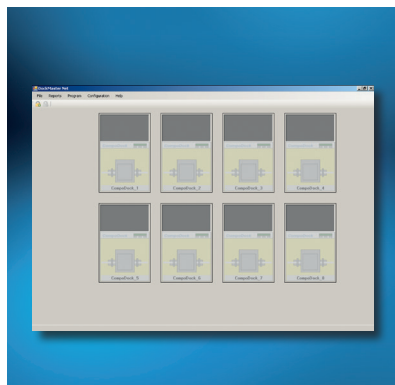
CE

UL US LISTED

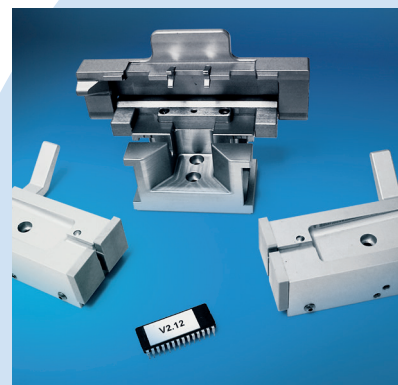
Also tested by the Paul-Ehrlich-Institut (PEI)



CompoDock® with two interfaces for data management

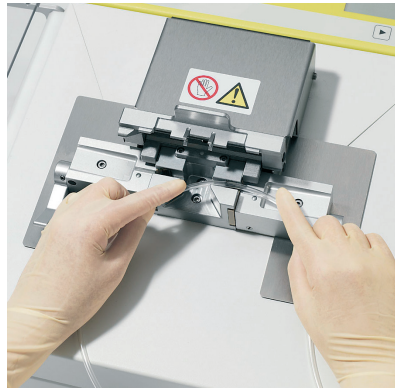


DockMaster Net program for data acquisition according to GMP rules

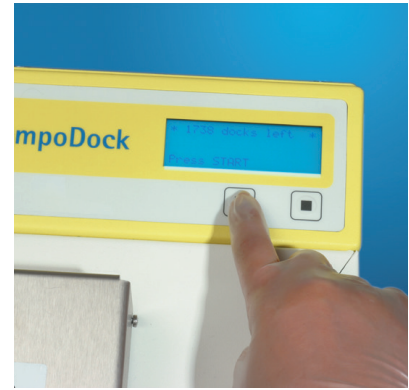


Upgrade Kit

Just **two** manual steps to create a sterile connection



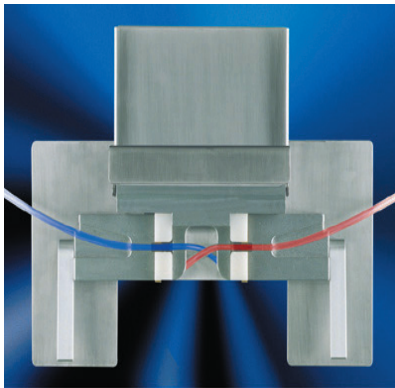
1 Place the tubing inside the tube channels, press down the position cover, close the clamps. The docking process starts automatically.



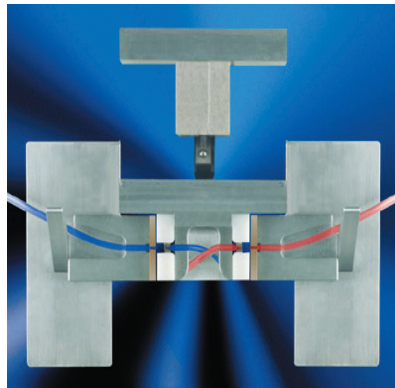
2 Finally, take out the dock and press the START button to reset the clamps for the next process cycle.

That's it!

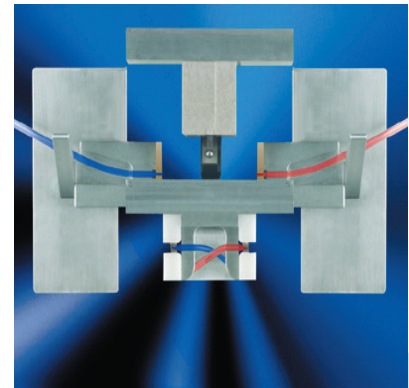
Patented technology for a sterile connection of medical PVC tubes



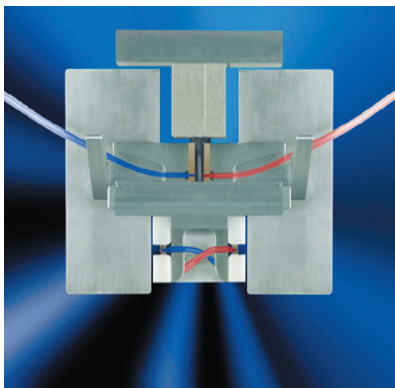
1. The tubes are placed inside the clamps. As there is only one tube channel, a mix up by accident is impossible.



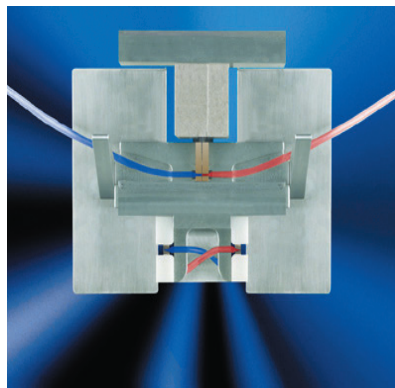
2. The docking process is fully automated - after the clamps are closed the tube ends are sealed.



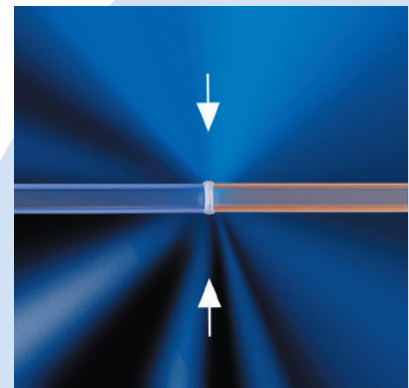
3. The clamps move to the upper heater and docking chamber.



4. The permanent heating element comes out - and heats the sealed tube ends without touching them - resulting in only little odour.



5. The docking process - both clamps move together to connect the heated tube ends.



6. The dock is now ready and can easily be opened by pressing the connected tubes.

Ordering information

For more information such as literature, technical details and working procedures as well as for equipment please contact your local sales representative or us.

ORDER NUMBERS

9028721	CompoDock® 100V AC, 50/60 Hz
9028681	CompoDock® Counter 2500 docks
9028691	CompoDock® Counter 1000 docks
9028701	CompoDock® Counter 500 docks
9028921	Software DockMaster Net, CD + User Manual
9024391	Barcode scanner
M 608141	Scanner holder
M 672351	Serial cable, socket/socket, 3 m
M 672361	Serial cable, plug/socket, 5 m
M 672381	Interface converter USB-Serial, 2-fold
M 672371	Interface converter USB-Serial, 4-fold
M 672391	USB cable 2.0, FullSpeed, A plug/B plug, 5 m
M 672401	USB cable 2.0, active extension, A plug/A socket, 5 m

TECHNICAL DATA

9028651	CompoDock® (delivered with a counter of 100 docks) Tube specification: OD = 3.9 - 4.6 mm, ID = 2.8 - 3.1 mm Power supply: 230/240V AC, 50/60 Hz Dimensions: 340 × 220 × 450 mm (L × W × H) Weight: 22.8 kg Cleared for sales in the US
9028801	CompoDock® wide bore tubes (delivered with a counter of 100 docks) Tube specification: OD = 4.6 - 5.4 mm, ID = 3.0 - 4.2 mm

 **FRESENIUS
KABI**
caring for life

Fresenius Kabi Deutschland GmbH

Else-Kröner-Straße 1
61352 Bad Homburg, Germany
Phone: +49 (0) 61 72 686 5047
Fax: +49 (0) 61 72 686 7259
compodock@fresenius-kabi.com
www.fresenius-kabi.com

The signs/names marked with ® are registered trademarks of the Fresenius Group in selected countries.

Your local sales organization: